



125 Series Below Panel Installation Guide



Part Numbers Covered:

Non Locking: 125-2000 | 125-3000 | 125-4000
Locking: 125-2100 | 125-3100 | 125-4100

AeroCatch® kit contents:

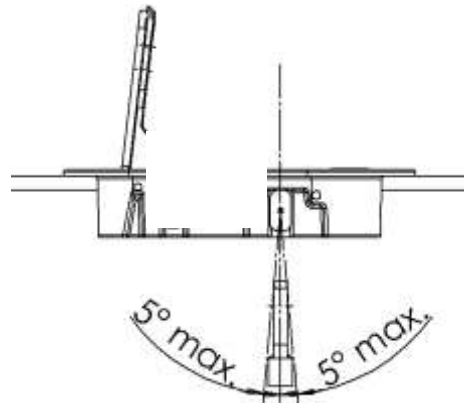
- 2 x AeroCatch®
- 2 x Red Aluminium Strikes (Steel with part numbers 125-4000, 125-4100)
- 2 x Nut Plates
- 2 x Rubber Bump Stops
- 1 x Fastener Kit
- 1 x Arrow Sticker Set
- 4 x Keys (Locking kits only)

Panel Cut Out

Use the dimensioned drawing or simply mark around the inside of the AeroCatch® fixing plate. Always take time when marking and cutting to ensure correct installation.

When setting up the AeroCatch® aim to have the stud at right angles to the housing however there is a + 5° tolerance to allow for any misalignment (see fig 2).

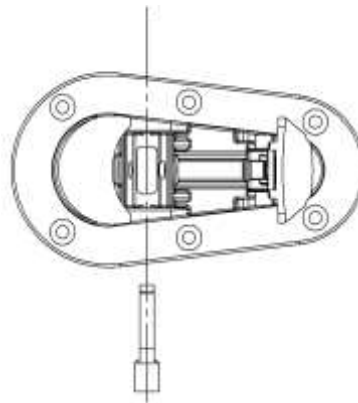
Fig 2



AeroCatch® will take up a small radius on the bonnet but you may wish to fare around it with silicone in tighter radius areas. Do not distort the housing when fixing, as this will adversely affect its operation and performance.

Side Mounting

Fig 3

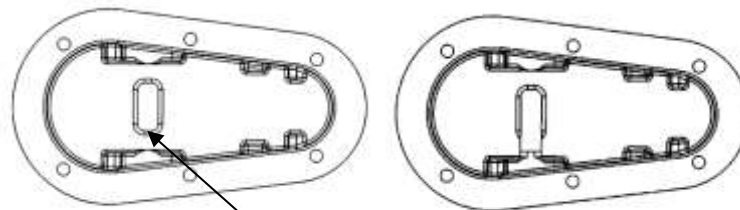


This mounting method is unique to the AeroCatch®. It is important that the stud and AeroCatch® axis are at right angles to ensure smooth operation. Setting up and operation is the same as for top mounting.

Hinged Panel Mounting

This mounting method requires the removal of a small piece of material from the underside of the AeroCatch®. This allows the AeroCatch® to swing over the strike stud, which can be achieved with a small hacksaw (see Fig 4).

Fig 4

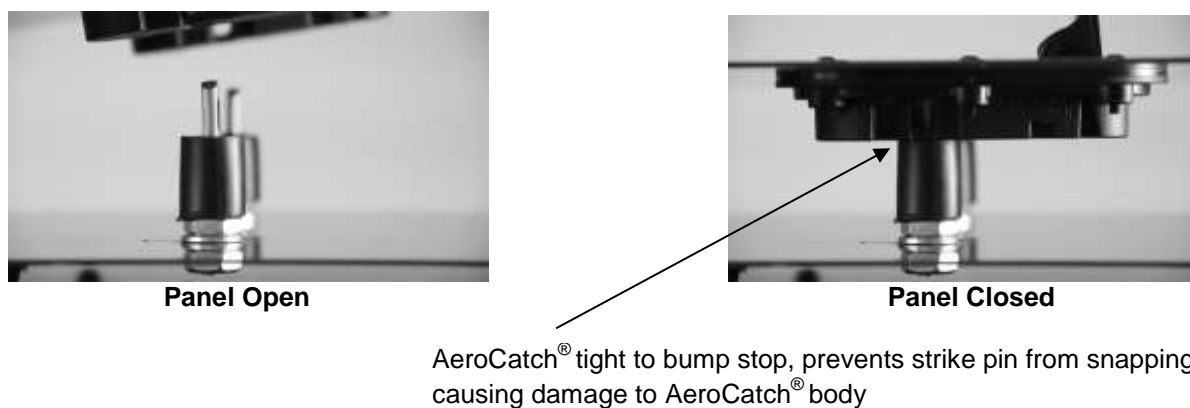


Material to be removed

Setting up and Operation of AeroCatch®

It is important when setting up the AeroCatch® to ensure it **sits firmly on the rubber bump stops** supplied. Failure to set up correctly may cause operating problems. These need to be cut to length and slide over the stud strikes. You should adjust the stud strikes to ensure that you still need to put a little pressure on the bonnet when closing it, so that **the load is kept on the bump stops** (see Fig 5).

Fig 5



When setting up the AeroCatch®, the shear pin needs to engage the slot in the stud. Adjust the stud so that the shear pin engages at the top of the slot and slightly compresses the bump stops to ensure a snug fit. The bump stops are supplied 40 mm long and can be cut down as required. When adjusting the studs to get the correct fit you can see the engagement of the shear pin in the stud by opening the latch to the free travel position.



Care of your AeroCatch

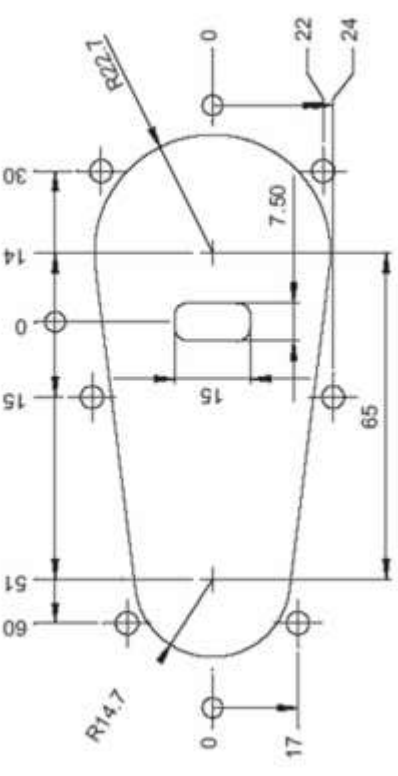
To optimise performance of AeroCatch®, clean mechanism regularly with a small brush to remove any swarf, dirt or grit.

If you have the 'Carbon Look' AeroCatch®, treat the finish as you would treat the vehicle body paint work, clean with car shampoo and polish or wax but do not use any abrasive cutting style polishes as it will affect the top finish of the lacquer.

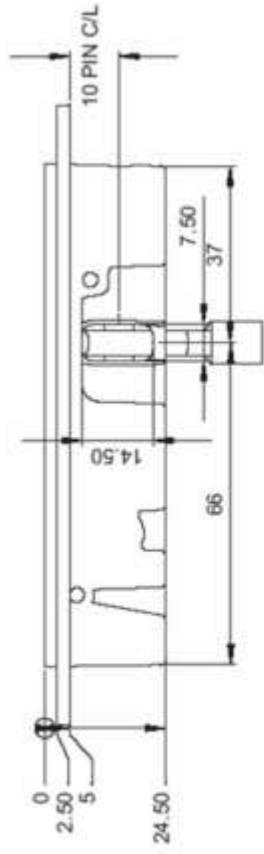
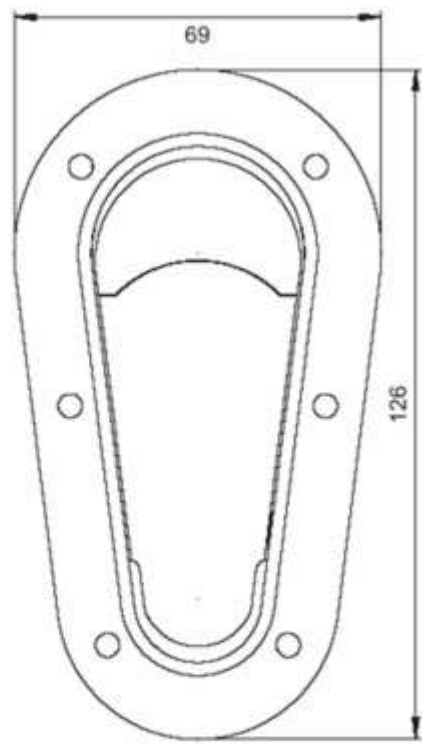
Technical Support

Should you encounter problems, please call our technical support on **+44 (0)1803 868677**
Alternatively email us: sales@aerocatch.com

DO NOT SCALE DRAWING | IF IN DOUBT, ASK. | DEBUR AND BREAK SHARP EDGES 0.05-0.15 UNLESS SPECIFIED | DIMENSIONS SHOWN ARE FINISHED DIMENSIONS | IF NOT SIGNED APPROVED, DRAWING IS REFERENCE ONLY. | PROJECT NO. - AEROCATCH



Panel cut-out



NOT TO SCALE

| ISSUE | ECN NO. | FIRST ISSUE | REVISION | BY | DATE |
|-------|---------|-------------|----------|----|------|
| A | | | | | |

| | | | | | |
|--|--|---|--|----------------------|--|
| TOLERANCES: UNLESS OTHERWISE SPECIFIED, DIMENSIONS ARE IN MILLIMETRES SURFACE FINISH ALL TOOL TIP RADIUS UNLESS OTHERWISE STATED | | LINEAR: METRIC: 0.05, 0.1, 0.2, 0.3, 0.4, 0.5, 0.6, 0.8, 1.0, 1.2, 1.5, 2.0, 3.0, 4.0, 5.0, 6.0, 8.0, 10.0 INCH: 0.001, 0.002, 0.003, 0.004, 0.005, 0.006, 0.008, 0.010, 0.012, 0.015, 0.020, 0.025, 0.030, 0.040, 0.050, 0.060, 0.075, 0.100, 0.125, 0.150, 0.200, 0.250, 0.300, 0.400, 0.500, 0.600, 0.750, 1.000, 1.250, 1.500, 2.000, 2.500, 3.000, 4.000, 5.000, 6.000, 8.000, 10.000 | | ANGULAR: ± 1° | |
| UNLESS OTHERWISE SPECIFIED, DIMENSIONS ARE IN MILLIMETRES SURFACE FINISH ALL TOOL TIP RADIUS UNLESS OTHERWISE STATED | | LINEAR: METRIC: 0.05, 0.1, 0.2, 0.3, 0.4, 0.5, 0.6, 0.8, 1.0, 1.2, 1.5, 2.0, 3.0, 4.0, 5.0, 6.0, 8.0, 10.0 INCH: 0.001, 0.002, 0.003, 0.004, 0.005, 0.006, 0.008, 0.010, 0.012, 0.015, 0.020, 0.025, 0.030, 0.040, 0.050, 0.060, 0.075, 0.100, 0.125, 0.150, 0.200, 0.250, 0.300, 0.400, 0.500, 0.600, 0.750, 1.000, 1.250, 1.500, 2.000, 2.500, 3.000, 4.000, 5.000, 6.000, 8.000, 10.000 | | ANGULAR: ± 1° | |

| | | | |
|---|--|-----------------------------------|--|
| PROJECTION: THIRD ANGLE (BY ISO) | | PROJECT NO.: 125 SERIES | |
| SCALE: 1:1 | | SHEET 1 OF 1 | |
| ISSUE: A | | DATE: - | |

